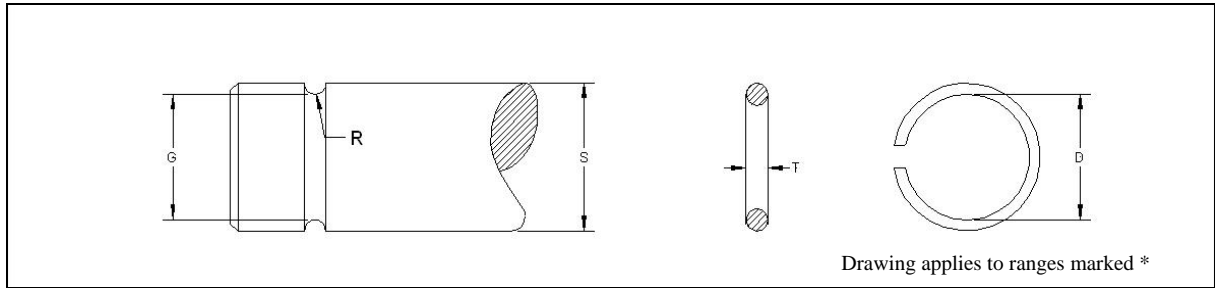
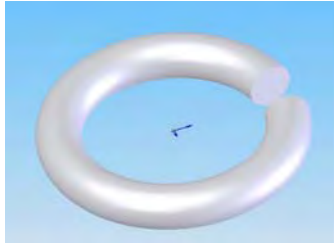


## Stock Range of Circlips/Plain Wire Rings



### AS0900 'A' Range \*

SIZE CODE	Shaft (S)			Groove (G)				Circlip (F)			
	S			G		r		D (max)		t	
	(frac)	(in)	(metric)	(in)	(mm)	(in)	(mm)	(in)	(mm)	(in)	(mm)
A025	1/4	0.250	6.35	0.232	5.89	0.0187	0.475	0.230	5.84	0.036	0.91
A037	3/8	0.375	9.53	0.349	8.86	0.024	0.610	0.345	8.76	0.043	1.09
A050	1/2	0.500	12.70	0.464	11.79	0.031	0.787	0.458	11.63	0.059	1.50
A062	5/8	0.625	15.88	0.581	14.76	0.039	0.991	0.575	14.61	0.072	1.83
A068	11/16	0.688	17.48	0.644	16.36	0.039	0.991	0.637	16.18	0.072	1.83
A075	3/4	0.750	19.05	0.698	17.73	0.044	1.118	0.690	17.53	0.085	2.16
A100	1	1.000	25.40	0.926	23.52	0.0605	1.537	0.917	23.29	0.118	3.00

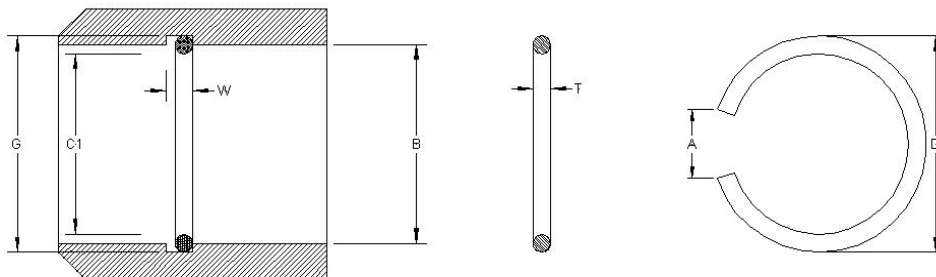
### AS0900 Range \*

SIZE CODE	Shaft (S)			Groove (G)				Circlip (F)			
	S			G		r		D (max)		t	
	(frac)	(in)	(metric)	(in)	(mm)	(in)	(mm)	(in)	(mm)	(in)	(mm)
0012	1/8	0.125	3.18	0.111	2.82	0.013	0.330	0.110	2.79	0.022	0.56
0015	5/32	0.156	3.96	0.142	3.61	0.013	0.330	0.140	3.56	0.022	0.56
0018	3/16	0.187	4.75	0.174	4.42	0.013	0.330	0.172	4.37	0.022	0.56
0021	7/32	0.219	5.56	0.205	5.21	0.013	0.330	0.202	5.13	0.022	0.56
0025	1/4	0.250	6.35	0.232	5.89	0.016	0.406	0.230	5.84	0.028	0.71
0037	3/8	0.375	9.53	0.357	9.07	0.016	0.406	0.353	8.97	0.028	0.71
0043	7/16	0.438	11.13	0.416	10.57	0.020	0.508	0.412	10.46	0.036	0.91
0050	1/2	0.500	12.70	0.474	12.04	0.024	0.610	0.468	11.89	0.043	1.09
0056	9/16	0.562	14.27	0.534	13.56	0.026	0.660	0.529	13.44	0.045	1.14
0062	5/8	0.625	15.88	0.593	15.06	0.028	0.711	0.587	14.91	0.051	1.30
0068	11/16	0.688	17.48	0.656	16.66	0.028	0.711	0.649	16.48	0.051	1.30
0075	3/4	0.750	19.05	0.714	18.14	0.031	0.787	0.706	17.93	0.059	1.50
0087	7/8	0.875	22.23	0.831	21.11	0.039	0.991	0.823	20.90	0.072	1.83
0093	15/16	0.938	23.83	0.894	22.71	0.039	0.991	0.885	22.48	0.072	1.83
0106	1.1/16	1.062	26.97	1.011	25.68	0.044	1.118	1.000	25.40	0.085	2.16
0118	1.3/16	1.188	30.18	1.126	28.60	0.052	1.321	1.114	28.30	0.100	2.54
0137	1.3/8	1.375	34.93	1.295	32.89	0.069	1.753	1.281	32.54	0.130	3.30

AS1000 Range \*

SIZE CODE	Shaft (S)			Groove (G)				Circlip (F)			
	S			G		r		D (max)		t	
	(frac)	(in)	(mm)	(in)	(mm)	(in)	(mm)	(in)	(mm)	(in)	(mm)
0012	1/8	0.125	3.18	0.113	2.87	0.0065	0.165	0.110	2.79	0.012	0.30
0025	1/4	0.250	6.35	0.228	5.79	0.0115	0.292	0.221	5.61	0.022	0.56
0031	5/16	0.312	7.92	0.290	7.37	0.0115	0.292	0.281	7.14	0.022	0.56
0034	11/32	0.344	8.74	0.322	8.18	0.0115	0.475	0.312	7.92	0.022	0.56
0037	3/8	0.375	9.53	0.339	8.61	0.0187	0.475	0.329	8.36	0.036	0.91
0040	13/32	0.406	10.31	0.370	9.40	0.0187	0.475	0.359	9.12	0.036	0.91
0043	7/16	0.438	11.13	0.402	10.21	0.0187	0.475	0.39	9.91	0.036	0.91
0046	15/32	0.469	11.91	0.433	11.00	0.0187	0.475	0.42	10.67	0.036	0.91
0050	1/2	0.500	12.70	0.452	11.48	0.2500	6.350	0.438	11.13	0.048	1.22
0056	9/16	0.562	14.27	0.514	13.06	0.2500	6.350	0.498	12.65	0.048	1.22
0062	5/8	0.625	15.88	0.577	14.66	0.2500	6.350	0.56	14.22	0.048	1.22
0068	11/16	0.688	17.48	0.640	16.26	0.2500	6.350	0.621	15.77	0.048	1.22
0075	3/4	0.750	19.05	0.686	17.42	0.0335	0.851	0.665	16.89	0.064	1.63
0081	13/16	0.812	20.62	0.748	19.00	0.0335	0.851	0.726	18.44	0.064	1.63
0087	7/8	0.875	22.23	0.811	20.60	0.0335	0.851	0.786	19.96	0.064	1.63
0093	15/16	0.938	23.83	0.874	22.20	0.0335	0.851	0.848	21.54	0.064	1.63
0100	1	1.000	25.40	0.936	23.77	0.0335	0.851	0.908	23.06	0.064	1.63
0106	1.1/16	1.062	26.97	0.982	24.94	0.0415	1.054	0.953	24.21	0.080	2.03
0112	1.1/8	1.125	28.58	1.045	26.54	0.0415	1.054	1.012	25.70	0.080	2.03
0125	1.1/4	1.250	31.75	1.170	29.72	0.0415	1.054	1.135	28.83	0.080	2.03
0137	1.3/8	1.375	34.93	1.295	32.89	0.0415	1.054	1.258	31.95	0.080	2.03
0150	1.1/2	1.500	38.10	1.420	36.07	0.0415	1.054	1.38	35.05	0.080	2.03
0162	1.5/8	1.625	41.28	1.545	39.24	0.0415	1.054	1.5	38.10	0.080	2.03
0175	1.3/4	1.750	44.45	1.670	42.42	0.0415	1.054	1.621	41.17	0.080	2.03
0187	1.7/8	1.875	47.63	1.771	44.98	0.0545	1.384	1.72	43.69	0.104	2.64
0200	2	2.000	50.80	1.896	48.16	0.0545	1.384	1.84	46.74	0.104	2.64
0212	2.1/8	2.125	53.98	2.021	51.33	0.0545	1.384	1.96	49.78	0.104	2.64
0237	2.3/8	2.375	60.33	2.271	57.68	0.0545	1.384	2.203	55.96	0.104	2.64
0250	2.1/2	2.500	63.50	2.396	60.86	0.0545	1.384	2.324	59.03	0.104	2.64
0262	2.5/8	2.625	66.68	2.497	63.42	0.0665	1.689	2.425	61.60	0.128	3.25
0300	3	3.000	76.20	2.872	72.95	0.0665	1.689	2.785	70.74	0.128	3.25

AS1700 Range \*\*



Drawing applies to ranges marked \*\*

SIZE CODE	Bore (B)		Groove (G)				Circlip (F)							
	B		G		W		D (min)		T		C1		A	
	(in)	(mm)	(in)	(mm)	(in)	(mm)	(in)	(mm)	(in)	(mm)	(in)	(mm)	(in)	(mm)
0100	0.39	10	0.44	11.05	0.039	1.0	0.465	11.8	0.035	0.9	0.350	8.9	0.276	7.0
0120	0.47	12	0.52	13.13	0.043	1.1	0.547	13.9	0.039	1.0	0.425	10.8	0.276	7.0
0125	0.49	13	0.54	13.64	0.043	1.1	0.567	14.4	0.039	1.0	0.445	11.3	0.276	7.0
0130	0.51	13	0.56	14.15	0.043	1.1	0.587	14.9	0.039	1.0	0.465	11.8	0.276	7.0
0140	0.55	14	0.60	15.34	0.051	1.3	0.634	16.1	0.047	1.2	0.496	12.6	0.295	7.5
0150	0.59	15	0.64	16.36	0.051	1.3	0.673	17.1	0.047	1.2	0.535	13.6	0.295	7.5
0160	0.63	16	0.68	17.35	0.051	1.3	0.713	18.1	0.047	1.2	0.575	14.6	0.295	7.5
0170	0.67	17	0.73	18.54	0.059	1.5	0.760	19.3	0.055	1.4	0.602	15.3	0.315	8.0
0175	0.69	18	0.75	19.05	0.059	1.5	0.787	20.0	0.055	1.4	0.622	15.8	0.354	9.0
0180	0.71	18	0.77	19.56	0.059	1.5	0.807	20.5	0.055	1.4	0.642	16.3	0.354	9.0
0190	0.75	19	0.81	20.55	0.059	1.5	0.846	21.5	0.055	1.4	0.681	17.3	0.354	9.0
0200	0.79	20	0.85	21.54	0.059	1.5	0.886	22.5	0.055	1.4	0.720	18.3	0.354	9.0
0210	0.83	21	0.90	22.76	0.067	1.7	0.933	23.7	0.063	1.6	0.752	19.1	0.374	9.5
0220	0.87	22	0.94	23.75	0.067	1.7	0.972	24.7	0.063	1.6	0.791	20.1	0.374	9.5
0240	0.94	24	1.02	25.96	0.075	1.9	1.063	27.0	0.071	1.8	0.862	21.9	0.394	10.0
0250	0.98	25	1.06	26.95	0.075	1.9	1.098	27.9	0.071	1.8	0.902	22.9	0.394	10.0
0280	1.10	28	1.19	30.15	0.083	2.1	1.224	31.1	0.079	2.0	1.012	25.7	0.433	11.0
0300	1.18	30	1.27	32.15	0.083	2.1	1.303	33.1	0.079	2.0	1.091	27.7	0.433	11.0
0320	1.26	32	1.34	34.15	0.083	2.1	1.382	35.1	0.079	2.0	1.169	29.7	0.433	11.0
0340	1.34	34	1.42	36.17	0.083	2.1	1.461	37.1	0.079	2.0	1.248	31.7	0.433	11.0